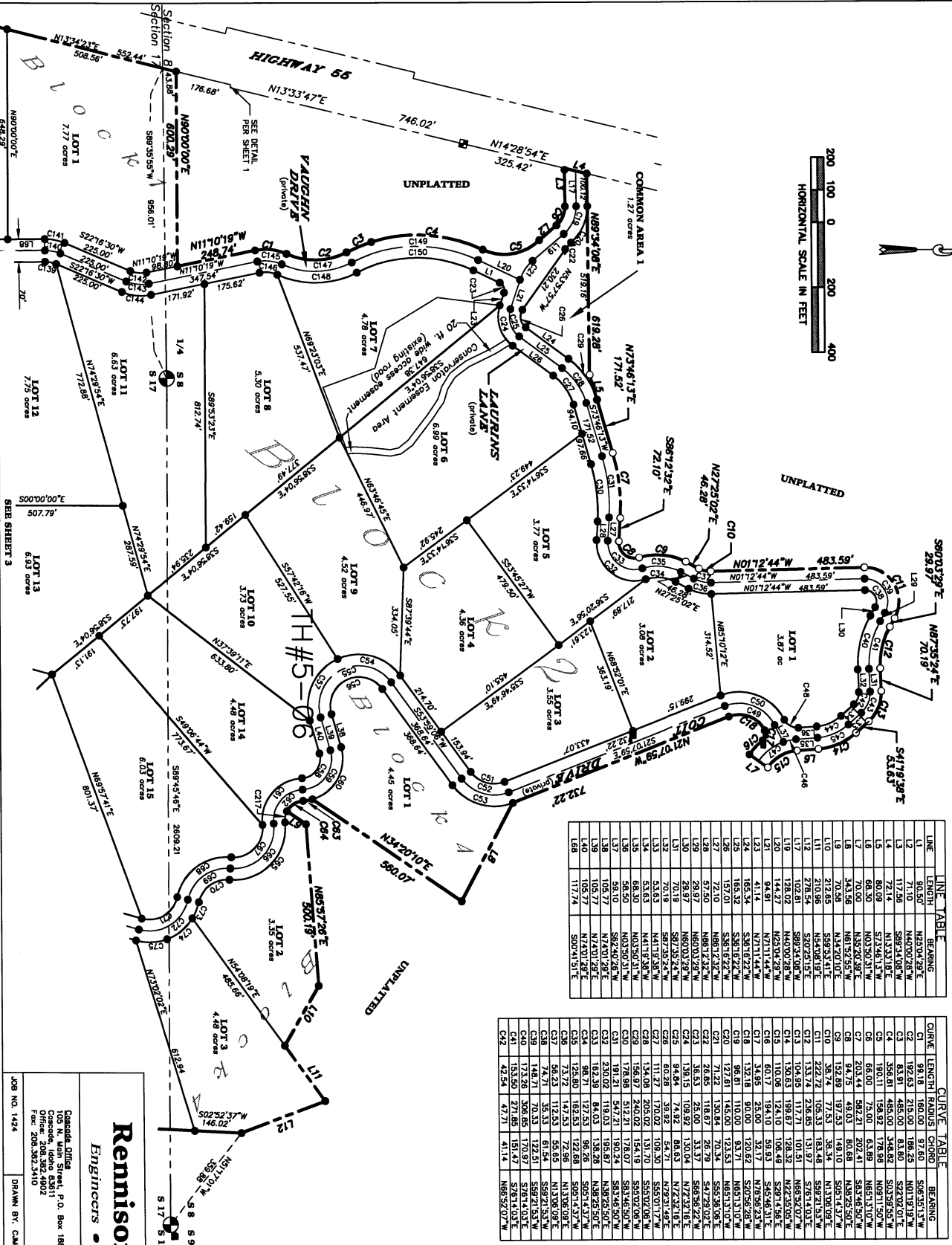
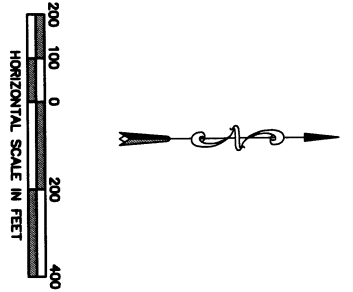


Herrick Hills Subdivision No. 1

Located in Sections 8, 16, and 17
T. 12 N., R. 4 E., B.M., Valley County, Idaho
2007



LINE	LENGTH	BEARING
L1	90.50'	N25°04'29"E
L2	171.06'	N40°00'28"W
L3	83.97'	N13°34'18"E
L4	72.14'	N13°34'18"E
L5	60.09'	S73°46'13"W
L6	60.09'	N03°50'31"W
L7	70.00'	N35°20'39"E
L8	343.58'	N61°52'55"W
L9	70.98'	N34°24'01"E
L10	210.86'	N54°08'19"E
L11	210.86'	N54°08'19"E
L12	278.54'	S20°23'15"E
L13	102.81'	S89°34'08"W
L14	128.02'	N40°00'28"W
L15	144.27'	N23°04'29"W
L16	41.14'	N17°11'44"W
L17	165.34'	N81°16'22"W
L18	165.34'	S38°16'22"W
L19	165.32'	S38°16'22"W
L20	157.01'	S38°16'22"W
L21	72.10'	N88°12'32"E
L22	57.50'	N88°12'32"E
L23	28.97'	N80°03'28"W
L24	70.18'	S82°35'24"W
L25	70.18'	S82°35'24"W
L26	53.63'	N41°18'38"W
L27	64.50'	N03°50'31"W
L28	64.50'	N03°50'31"W
L29	58.10'	S82°40'28"W
L30	108.77'	N74°01'28"E
L31	108.77'	N74°01'28"E
L32	108.77'	N74°01'28"E
L33	117.74'	S00°41'51"E

CURVE	LENGTH	RADIUS	CHORD	BEARING
C1	99.18	180.00	97.60	S08°55'13"W
C2	171.06	180.00	164.67	N65°52'02"W
C3	83.97	485.00	83.80	S22°02'01"E
C4	356.81	485.00	348.82	S03°59'55"W
C5	190.11	156.92	178.88	N09°11'50"W
C6	60.09	75.00	63.99	N65°31'07"W
C7	203.44	592.21	202.61	N38°26'50"E
C8	94.75	183.01	80.88	N38°26'50"E
C9	32.89	77.53	38.34	N33°58'50"E
C10	222.72	106.33	183.48	S89°21'53"W
C11	133.74	136.65	131.97	S78°14'03"E
C12	104.95	117.81	101.51	S78°14'03"E
C13	104.95	117.81	101.51	S78°14'03"E
C14	150.63	198.87	128.32	N22°35'05"W
C15	110.96	124.10	108.49	S22°14'58"E
C16	34.85	25.00	32.17	N82°56'23"W
C17	132.18	80.00	120.62	S07°56'28"W
C18	96.81	110.00	93.71	N65°13'07"W
C19	172.61	145.00	123.53	N65°13'07"W
C20	71.22	130.84	70.34	S55°38'06"E
C21	68.25	118.67	65.79	S47°28'02"E
C22	28.97	28.97	28.97	N82°32'16"E
C23	84.64	74.92	88.63	N72°32'16"E
C24	60.28	39.92	54.71	N72°32'16"E
C25	111.27	170.02	109.30	S55°01'17"W
C26	134.08	205.02	131.70	S55°02'08"W
C27	136.98	57.21	178.07	S33°42'50"W
C28	131.21	54.21	180.24	S33°42'50"W
C29	230.02	119.03	195.87	N38°26'50"E
C30	182.39	84.03	138.28	N38°26'50"E
C31	98.71	127.53	98.28	S09°14'32"W
C32	125.80	182.53	122.68	S09°14'32"W
C33	54.23	112.53	56.65	N13°08'08"E
C34	74.71	35.33	81.54	S89°21'53"W
C35	148.71	70.33	122.53	S89°21'53"W
C36	173.28	308.85	170.97	S78°14'03"E
C37	153.50	271.85	151.47	S78°14'03"E
C38	42.54	47.71	41.14	N68°52'07"W

CURVE	LENGTH	RADIUS	CHORD	BEARING
C39	72.14	92.67	63.33	N65°52'02"W
C40	107.73	164.67	105.82	N65°52'02"W
C41	41.54	151.10	41.43	S11°9'20"E
C42	99.56	159.10	97.94	S38°43'45"E
C43	33.57	46.14	50.61	N28°27'02"E
C44	192.84	180.00	179.72	S24°06'14"E
C45	434.04	180.00	426.22	S24°06'14"E
C46	163.88	125.00	156.29	N02°52'44"E
C47	209.77	180.00	195.07	N02°52'44"E
C48	219.02	180.00	202.32	S14°48'08"W
C49	348.98	180.00	248.19	S24°58'42"E
C50	251.27	90.00	171.25	S24°58'42"E
C51	162.52	90.00	141.33	S24°58'42"E
C52	171.39	95.00	148.07	N54°17'28"W
C53	205.37	130.00	188.47	N68°43'08"W
C54	212.28	130.00	188.47	N68°43'08"W
C55	155.13	95.00	138.46	S48°23'17"E
C56	291.17	130.00	281.11	N08°20'01"W
C57	293.70	160.00	242.87	N45°22'23"W
C58	221.64	125.00	193.72	N45°22'23"W
C59	158.58	90.00	139.48	N45°22'23"W
C60	129.53	160.00	210.35	S38°40'31"E
C61	129.53	160.00	210.35	S38°40'31"E
C62	129.53	160.00	210.35	S38°40'31"E
C63	129.53	160.00	210.35	S38°40'31"E
C64	129.53	160.00	210.35	S38°40'31"E
C65	129.53	160.00	210.35	S38°40'31"E
C66	129.53	160.00	210.35	S38°40'31"E
C67	129.53	160.00	210.35	S38°40'31"E
C68	129.53	160.00	210.35	S38°40'31"E
C69	129.53	160.00	210.35	S38°40'31"E
C70	129.53	160.00	210.35	S38°40'31"E
C71	129.53	160.00	210.35	S38°40'31"E
C72	129.53	160.00	210.35	S38°40'31"E
C73	129.53	160.00	210.35	S38°40'31"E
C74	129.53	160.00	210.35	S38°40'31"E
C75	129.53	160.00	210.35	S38°40'31"E
C76	129.53	160.00	210.35	S38°40'31"E
C77	129.53	160.00	210.35	S38°40'31"E
C78	129.53	160.00	210.35	S38°40'31"E
C79	129.53	160.00	210.35	S38°40'31"E
C80	129.53	160.00	210.35	S38°40'31"E
C81	129.53	160.00	210.35	S38°40'31"E
C82	129.53	160.00	210.35	S38°40'31"E
C83	129.53	160.00	210.35	S38°40'31"E
C84	129.53	160.00	210.35	S38°40'31"E
C85	129.53	160.00	210.35	S38°40'31"E
C86	129.53	160.00	210.35	S38°40'31"E
C87	129.53	160.00	210.35	S38°40'31"E
C88	129.53	160.00	210.35	S38°40'31"E
C89	129.53	160.00	210.35	S38°40'31"E
C90	129.53	160.00	210.35	S38°40'31"E
C91	129.53	160.00	210.35	S38°40'31"E
C92	129.53	160.00	210.35	S38°40'31"E
C93	129.53	160.00	210.35	S38°40'31"E
C94	129.53	160.00	210.35	S38°40'31"E
C95	129.53	160.00	210.35	S38°40'31"E
C96	129.53	160.00	210.35	S38°40'31"E
C97	129.53	160.00	210.35	S38°40'31"E
C98	129.53	160.00	210.35	S38°40'31"E
C99	129.53	160.00	210.35	S38°40'31"E
C100	129.53	160.00	210.35	S38°40'31"E



Remnison Fodrea, Inc.
Engineers • Surveyors • Planners

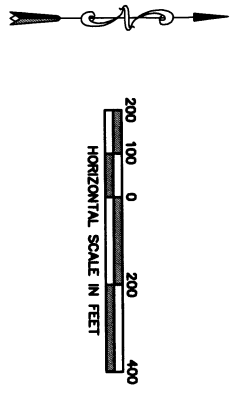
Casaca Office
 105 N. Main Street, P.O. Box 188
 Casaca, Idaho 83816
 Phone: 208.992.3410
 Fax: 208.992.3410

Eagle Office
 430 N. State St., Suite 140
 Eagle, Idaho 83616
 Phone: 208.992.3410
 Fax: 208.992.3410

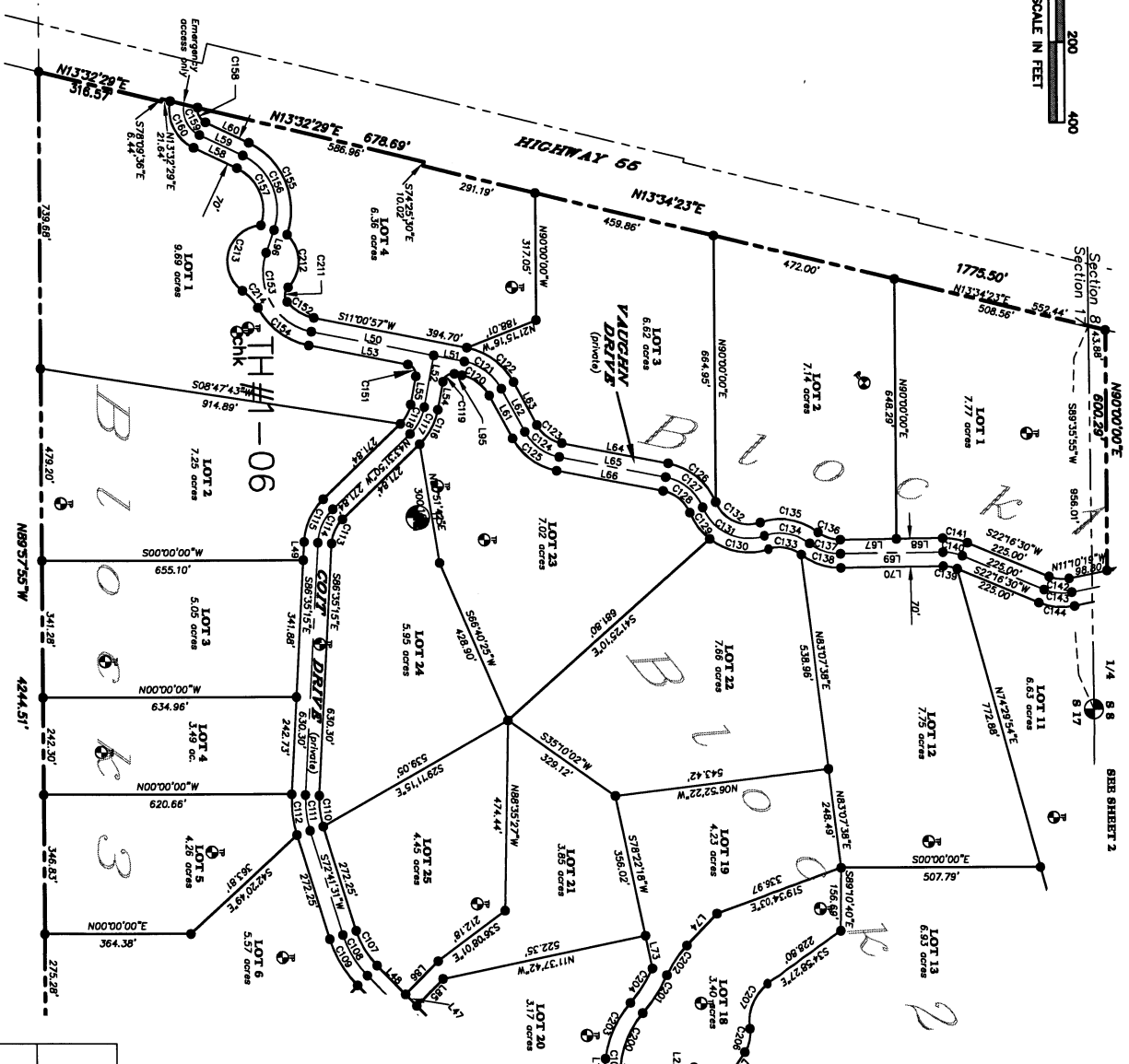
JOB NO. 1424 DRAWN BY: CM
 DATE: May, 2007 SHEET 2 of 5

Herrick Hills Subdivision No. 1

Located in Sections 8, 16, and 17
T. 12 N., R. 4 E., B.M., Valley County, Idaho
2007



LINE	LENGTH	BEARING
L18	45.32'	N81°55'35"W
L17	45.32'	N81°55'35"W
L47	40.00'	N45°23'37"W
L48	101.00'	S45°23'37"W
L49	45.69'	S88°35'15"E
L50	315.36'	S11°00'57"W
L51	79.32'	S11°00'57"W
L52	211.50'	N78°59'03"W
L53	211.50'	N78°59'03"W
L54	21.50'	N78°59'03"W
L55	71.50'	N78°59'03"W
L56	41.94'	S09°18'58"W
L57	118.41'	N25°26'48"E
L58	118.41'	N25°26'48"E
L59	118.41'	N25°26'48"E
L60	122.31'	S81°36'48"W
L61	122.31'	S81°36'48"W
L62	271.78'	S103°42'4"W
L63	271.78'	S103°42'4"W
L64	271.78'	S103°42'4"W
L65	271.78'	S103°42'4"W
L66	271.78'	S103°42'4"W
L67	142.82'	S00°41'51"E
L68	172.74'	S00°41'51"E
L69	260.58'	S00°41'51"E
L70	260.58'	S00°41'51"E
L71	72.33'	S89°20'25"E
L72	72.33'	S89°20'25"E
L73	83.15'	S74°59'00"E
L85	84.90'	S44°38'23"E
L86	117.21'	S103°03'1"E
L87	58.77'	S103°03'1"E
L88	58.77'	S103°03'1"E



SEE SHEET 4

CURVE	LENGTH	RADIUS	CHORD	BEARING
C14	15.45'	180.00'	15.77'	S55°10'40"W
C15	15.45'	180.00'	15.77'	S55°10'40"W
C16	13.48'	160.00'	13.36'	S01°29'45"W
C17	102.44'	215.00'	101.47'	N59°02'54"E
C18	119.11'	250.00'	117.99'	N59°02'54"E
C19	135.79'	285.00'	134.51'	N59°02'54"E
C20	177.75'	315.00'	177.33'	N83°03'08"E
C21	180.00'	285.00'	102.51'	N83°03'08"E
C22	67.63'	90.00'	66.05'	S65°03'33"E
C23	93.94'	125.00'	91.74'	S65°03'33"E
C24	120.24'	160.00'	117.43'	S65°03'33"E
C25	190.00'	160.00'	97.43'	N81°15'28"W
C26	77.35'	125.00'	74.74'	N81°15'28"W
C27	159.27'	160.00'	152.76'	S39°25'28"W
C28	86.31'	100.00'	85.47'	S39°25'28"W
C29	119.22'	135.00'	115.38'	S39°25'28"W
C30	150.12'	170.00'	145.29'	S39°25'28"W
C31	79.65'	90.00'	77.08'	N45°15'35"E
C32	110.82'	125.00'	107.05'	N45°15'35"E
C33	159.27'	160.00'	152.76'	S39°25'28"W
C34	122.36'	125.00'	118.36'	S39°25'28"W
C35	86.59'	90.00'	85.94'	S39°25'28"W
C36	82.92'	160.00'	81.99'	N33°05'41"E
C37	158.01'	160.00'	151.86'	N09°57'28"E
C38	168.22'	160.00'	162.48'	N42°48'15"E
C39	168.22'	160.00'	162.48'	N42°48'15"E
C40	122.36'	125.00'	118.36'	S39°25'28"W
C41	84.15'	160.00'	83.72'	S104°47'20"W
C42	52.54'	90.00'	51.94'	N05°33'05"E
C43	72.97'	125.00'	71.80'	N05°33'05"E
C44	93.40'	160.00'	92.08'	N05°33'05"E
C45	36.27'	25.00'	35.36'	S59°03'59"E
C46	107.38'	160.00'	103.22'	N18°31'41"E
C47	168.22'	160.00'	162.48'	N42°48'15"E
C48	50.12'	125.00'	48.72'	S104°47'20"W
C49	64.15'	160.00'	63.72'	S104°47'20"W
C50	52.54'	90.00'	51.94'	N05°33'05"E
C51	93.40'	160.00'	92.08'	N05°33'05"E
C52	36.27'	25.00'	35.36'	S59°03'59"E
C53	107.38'	160.00'	103.22'	N18°31'41"E
C54	168.22'	160.00'	162.48'	N42°48'15"E
C55	164.32'	160.00'	156.87'	N80°20'08"E
C56	271.88'	160.00'	246.07'	S67°33'01"W
C57	220.45'	150.00'	201.14'	S67°33'01"W
C58	169.01'	115.00'	154.21'	S67°33'01"W
C59	44.83'	35.00'	44.86'	N61°58'27"E
C60	173.54'	125.00'	168.47'	N70°07'04"W
C61	112.58'	390.00'	112.19'	N55°46'13"W
C62	89.80'	270.00'	89.39'	N55°46'13"W
C63	154.60'	265.00'	152.42'	S65°17'49"E
C64	102.48'	355.00'	102.12'	N58°46'13"W
C65	101.24'	130.00'	106.97'	N13°02'47"W
C66	109.24'	81.00'	59.46'	N67°58'23"E
C67	141.02'	56.72'	35.39'	N68°16'14"W
C68	141.02'	56.72'	35.39'	N68°16'14"W
C69	221.20'	131.31'	189.84'	N73°58'33"W
C70	56.34'	119.89'	57.76'	N47°58'07"E



Remnison Fodrea, Inc.
Engineers • Surveyors • Planners

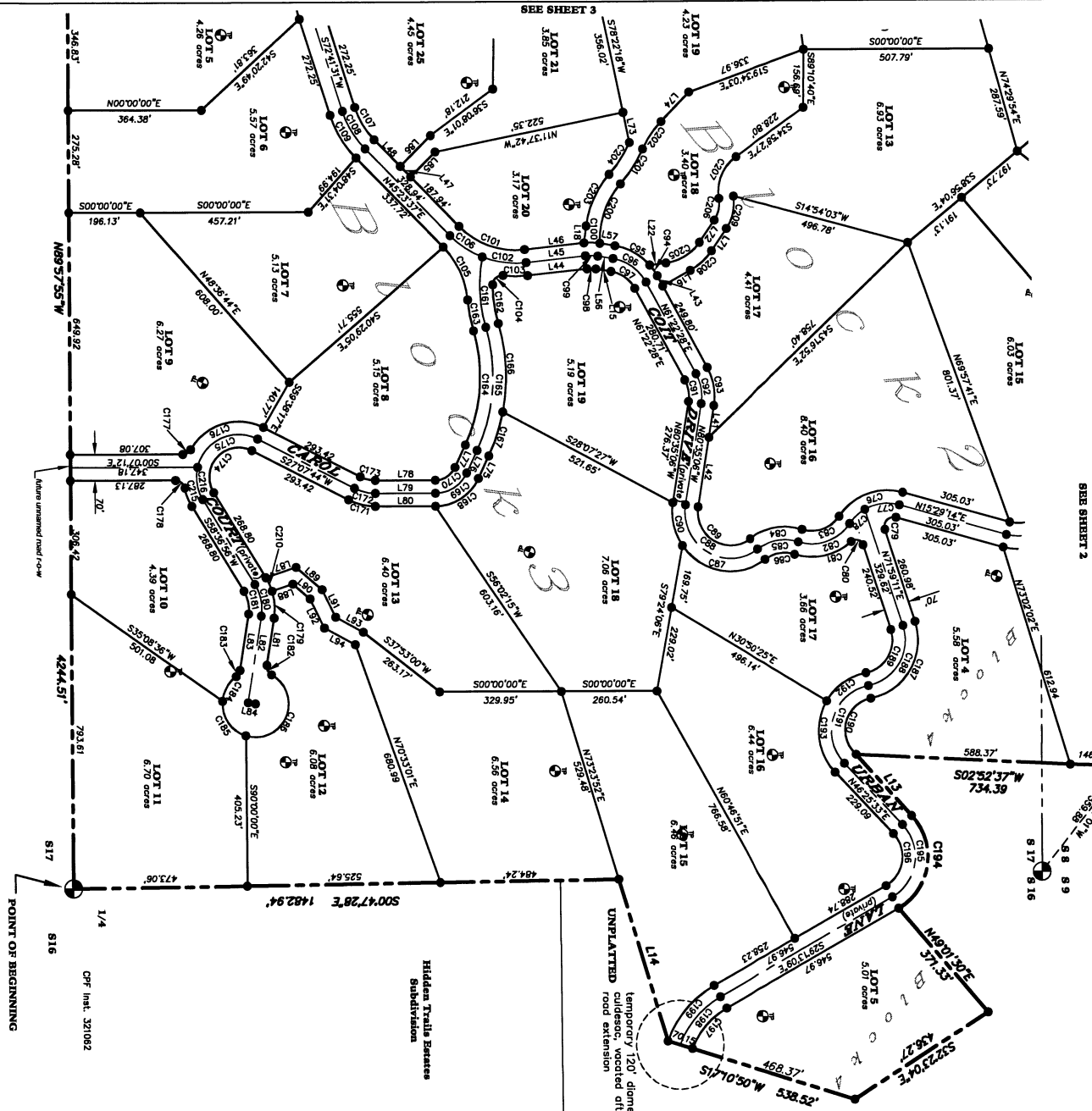
Caracida Office
635 N. Main Street, P.O. Box 188
Caracida, Idaho 83415
Office: 208.382.4802
Fax: 208.382.3410

Edgemoor Office
530 E. Shore St., Suite 140
Edgemoor, Idaho 83416
Office: 208.382.2440
Fax: 208.382.2441

DOB NO. 1424 DATE: May, 2007 SHEET 3 of 5

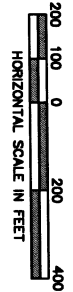
Herrick Hills Subdivision No. 1

Located in Sections 8, 16, and 17
T. 12 N., R. 4 E., B.M., Valley County, Idaho
2007



SEE SHEET 2

SEE SHEET 3



LINE TABLE

LINE	START	END	BEARING	DISTANCE
L1	70.00	S90°28'35\"W	174.58	
L2	455.73	S72°33'52\"W	113.98	
L3	419.4	S09°16'58\"W	113.98	
L4	88.15	N83°37'32\"W	113.98	
L5	44.86	N81°35'58\"W	113.98	
L6	44.86	N81°35'58\"W	113.98	
L7	66.49	S80°55'06\"E	113.98	
L8	188.88	S80°55'06\"E	113.98	
L9	30.91	N81°22'28\"E	113.98	
L10	182.01	N81°22'28\"E	113.98	
L11	182.01	N81°22'28\"E	113.98	
L12	182.01	N81°22'28\"E	113.98	
L13	182.01	N81°22'28\"E	113.98	
L14	182.01	N81°22'28\"E	113.98	
L15	182.01	N81°22'28\"E	113.98	
L16	182.01	N81°22'28\"E	113.98	
L17	182.01	N81°22'28\"E	113.98	
L18	182.01	N81°22'28\"E	113.98	
L19	182.01	N81°22'28\"E	113.98	
L20	182.01	N81°22'28\"E	113.98	
L21	182.01	N81°22'28\"E	113.98	
L22	182.01	N81°22'28\"E	113.98	
L23	182.01	N81°22'28\"E	113.98	
L24	182.01	N81°22'28\"E	113.98	

CURVE TABLE

CURVE	LENGTH	CHORD	BEARING	START	END
C1	188.63	180.00	S70°04'49\"E	188.63	0.00
C2	87.82	125.00	S6°44\"E	188.63	188.63
C3	57.27	125.00	S6°44\"E	188.63	313.90
C4	54.66	203.00	S45°15'48\"E	313.90	516.90
C5	38.77	203.00	S45°15'48\"E	516.90	719.90
C6	188.53	180.00	S18°46\"E	719.90	908.43
C7	188.53	180.00	S18°46\"E	908.43	1096.96
C8	152.23	160.00	S46°59'49\"E	1096.96	1259.19
C9	118.53	125.00	S46°59'49\"E	1259.19	1384.72
C10	258.82	160.00	S24°44'56\"E	1384.72	1553.55
C11	258.82	160.00	S24°44'56\"E	1553.55	1812.37
C12	218.76	90.00	N31°22'02\"E	1812.37	1903.39
C13	158.75	90.00	N31°22'02\"E	1903.39	2062.14
C14	82.69	125.00	S8°48\"E	2062.14	2144.83
C15	108.23	160.00	S8°48\"E	2144.83	2305.06
C16	35.49	160.00	S59°24'49\"E	2305.06	2465.29
C17	113.63	125.00	S59°24'49\"E	2465.29	2580.52
C18	91.23	90.00	S51°13'42\"E	2580.52	2671.65
C19	33.88	125.00	S33°87'45\"W	2671.65	2796.53
C20	43.49	160.00	S33°87'45\"W	2796.53	2956.76
C21	193.54	215.00	S19°33'04\"E	2956.76	3171.80
C22	68.28	285.00	N07°24'09\"E	3171.80	3456.89
C23	48.18	285.00	N07°24'09\"E	3456.89	3741.98
C24	48.18	285.00	N07°24'09\"E	3741.98	4027.07
C25	102.44	215.00	S01°29'45\"W	4027.07	4242.11
C26	102.44	215.00	S01°29'45\"W	4242.11	4457.15
C27	102.44	215.00	S01°29'45\"W	4457.15	4672.19
C28	102.44	215.00	S01°29'45\"W	4672.19	4887.23
C29	102.44	215.00	S01°29'45\"W	4887.23	5102.27
C30	102.44	215.00	S01°29'45\"W	5102.27	5317.31
C31	102.44	215.00	S01°29'45\"W	5317.31	5532.35
C32	102.44	215.00	S01°29'45\"W	5532.35	5747.39
C33	102.44	215.00	S01°29'45\"W	5747.39	5962.43
C34	102.44	215.00	S01°29'45\"W	5962.43	6177.47
C35	102.44	215.00	S01°29'45\"W	6177.47	6392.51
C36	102.44	215.00	S01°29'45\"W	6392.51	6607.55
C37	102.44	215.00	S01°29'45\"W	6607.55	6822.59
C38	102.44	215.00	S01°29'45\"W	6822.59	7037.63
C39	102.44	215.00	S01°29'45\"W	7037.63	7252.67
C40	102.44	215.00	S01°29'45\"W	7252.67	7467.71
C41	102.44	215.00	S01°29'45\"W	7467.71	7682.75
C42	102.44	215.00	S01°29'45\"W	7682.75	7897.79
C43	102.44	215.00	S01°29'45\"W	7897.79	8112.83
C44	102.44	215.00	S01°29'45\"W	8112.83	8327.87
C45	102.44	215.00	S01°29'45\"W	8327.87	8542.91
C46	102.44	215.00	S01°29'45\"W	8542.91	8757.95
C47	102.44	215.00	S01°29'45\"W	8757.95	8972.99
C48	102.44	215.00	S01°29'45\"W	8972.99	9188.03
C49	102.44	215.00	S01°29'45\"W	9188.03	9403.07
C50	102.44	215.00	S01°29'45\"W	9403.07	9618.11
C51	102.44	215.00	S01°29'45\"W	9618.11	9833.15
C52	102.44	215.00	S01°29'45\"W	9833.15	10048.19
C53	102.44	215.00	S01°29'45\"W	10048.19	10263.23
C54	102.44	215.00	S01°29'45\"W	10263.23	10478.27
C55	102.44	215.00	S01°29'45\"W	10478.27	10693.31
C56	102.44	215.00	S01°29'45\"W	10693.31	10908.35
C57	102.44	215.00	S01°29'45\"W	10908.35	11123.39
C58	102.44	215.00	S01°29'45\"W	11123.39	11338.43
C59	102.44	215.00	S01°29'45\"W	11338.43	11553.47
C60	102.44	215.00	S01°29'45\"W	11553.47	11768.51
C61	102.44	215.00	S01°29'45\"W	11768.51	11983.55
C62	102.44	215.00	S01°29'45\"W	11983.55	12198.59
C63	102.44	215.00	S01°29'45\"W	12198.59	12413.63
C64	102.44	215.00	S01°29'45\"W	12413.63	12628.67
C65	102.44	215.00	S01°29'45\"W	12628.67	12843.71
C66	102.44	215.00	S01°29'45\"W	12843.71	13058.75
C67	102.44	215.00	S01°29'45\"W	13058.75	13273.79
C68	102.44	215.00	S01°29'45\"W	13273.79	13488.83
C69	102.44	215.00	S01°29'45\"W	13488.83	13703.87
C70	102.44	215.00	S01°29'45\"W	13703.87	13918.91
C71	102.44	215.00	S01°29'45\"W	13918.91	14133.95
C72	102.44	215.00	S01°29'45\"W	14133.95	14348.99
C73	102.44	215.00	S01°29'45\"W	14348.99	14564.03
C74	102.44	215.00	S01°29'45\"W	14564.03	14779.07
C75	102.44	215.00	S01°29'45\"W	14779.07	14994.11
C76	102.44	215.00	S01°29'45\"W	14994.11	15209.15
C77	102.44	215.00	S01°29'45\"W	15209.15	15424.19
C78	102.44	215.00	S01°29'45\"W	15424.19	15639.23
C79	102.44	215.00	S01°29'45\"W	15639.23	15854.27
C80	102.44	215.00	S01°29'45\"W	15854.27	16069.31
C81	102.44	215.00	S01°29'45\"W	16069.31	16284.35
C82	102.44	215.00	S01°29'45\"W	16284.35	16499.39
C83	102.44	215.00	S01°29'45\"W	16499.39	16714.43
C84	102.44	215.00	S01°29'45\"W	16714.43	16929.47
C85	102.44	215.00	S01°29'45\"W	16929.47	17144.51
C86	102.44	215.00	S01°29'45\"W	17144.51	17359.55
C87	102.44	215.00	S01°29'45\"W	17359.55	17574.59
C88	102.44	215.00	S01°29'45\"W	17574.59	17789.63
C89	102.44	215.00	S01°29'45\"W	17789.63	18004.67
C90	102.44	215.00	S01°29'45\"W	18004.67	18219.71
C91	102.44	215.00	S01°29'45\"W	18219.71	18434.75
C92	102.44	215.00	S01°29'45\"W	18434.75	18649.79
C93	102.44	215.00	S01°29'45\"W	18649.79	18864.83
C94	102.44	215.00	S01°29'45\"W	18864.83	19079.87
C95	102.44	215.00	S01°29'45\"W	19079.87	19294.91
C96	102.44	215.00	S01°29'45\"W	19294.91	19509.95
C97	102.44	215.00	S01°29'45\"W	19509.95	19724.99
C98	102.44	215.00	S01°29'45\"W	19724.99	19940.03
C99	102.44	215.00	S01°29'45\"W	19940.03	20155.07
C100	102.44	215.00	S01°29'45\"W	20155.07	20370.11
C101	102.44	215.00	S01°29'45\"W	20370.11	20585.15
C102	102.44	215.00	S01°29'45\"W	20585.15	20800.19
C103	102.44	215.00	S01°29'45\"W	20800.19	21015.23
C104	102.44	215.00	S01°29'45\"W	21015.23	21230.27
C105	102.44	215.00	S01°29'45\"W	21230.27	21445.31
C106	102.44	215.00	S01°29'45\"W	21445.31	21660.35
C107	102.44	215.00	S01°29'45\"W	21660.35	21875.39
C108	102.44	215.00	S01°29'45\"W	21875.39	22090.43
C109	102.44	215.00	S01°29'45\"W	22090.43	22305.47
C110	102.44	215.00	S01°29'45\"W	22305.47	22520.51
C111	102.44	215.00	S01°29'45\"W	22520.51	22735.55
C112	102.44	215.00	S01°29'45\"W	22735.55	22950.59
C113	102.44	215.00	S01°29'45\"W	22950.59	23165.63
C114	102.44	215.00	S01°29'45\"W	23165.63	23380.67
C115	102.44	215.00	S01°29'45\"W	23380.67	23595.71
C116	102.44	215.00	S01°29'45\"W	23595.71	23810.75
C117	102.44	215.00	S01°29'45\"W	23810.75	24025.79
C118	102.44	215.00	S01°29'45\"W	24025.79	24240.83
C119	102.44	215.00	S01°29'45\"W	24240.83	24455.87
C120	102.44	215.00	S01°29'45\"W	24455.87	24670.91
C121	102.44	215.00	S01°29'45\"W	24670.91	24885.95
C122	102.44	215.00	S01°29'45\"W	24885.95	25100.99
C123	102.44	215.00	S01°29'45\"W	25100.99	25316.03
C124	102.44	215.00	S01°29'45\"W	25316.03	25531.07
C125	102.44	215.00	S01°29'45\"W	25531.07	25746.11
C126	102.44	215.00	S01°29'45\"W	25746.11	25961.15
C127	102.44	215.00	S01°29'45\"W	25961.15	26176.19
C128	102.44	215.00	S01°29'45\"W	26176.19	26391.23
C129	102.44	215.00	S01°29'45\"W	26391.23	26606.27
C130	102.44	215.00	S01°29'45\"W	26606.27	26821.31
C131	102.44	215.00	S01°29'45\"W	26821.31	27036.35
C132	102.44	215.00	S01°29'45\"W	27036.35	27251.39
C133	102.44	215.00	S01°29'45\"W	27251.39	27466.43
C134	102.44	215.00	S01°29'45\"W	27466.43	27681.47

Remnison Fodrea, Inc.
Engineers • Surveyors • Planners

Consulting Office
105 N. Main Street, P.O. Box 188
Idaho Falls, Idaho 83402
Office: 208.382.4902
Fax: 208.382.3410

DRAMA BY: CAM

DATE: May 2007

SHEET 4 of 5